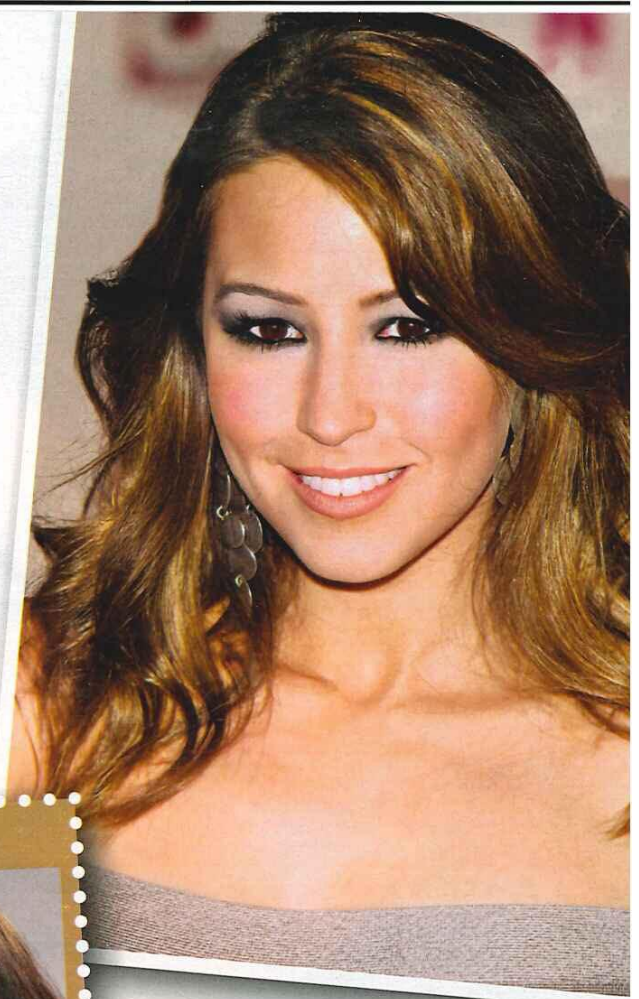


star beauty

Rachel Stevens wowed us on *Strictly* and she does it again with her smouldering make-up...

Rachel's classic style



We show you how



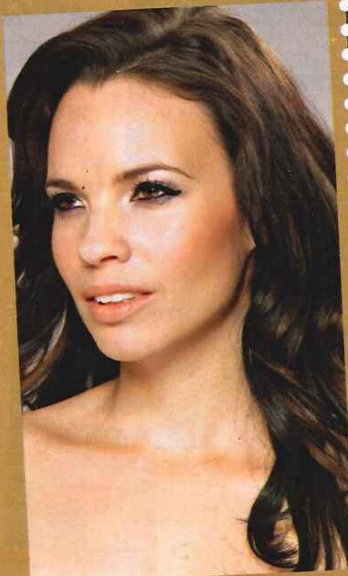
1

After applying your base and blush, blend highlighter in a U-shape around your eyes (following the socket bone).



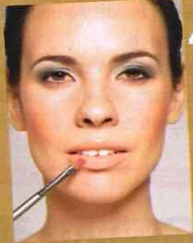
2

Apply a silvery grey eyeshadow on to your eyelids then add a shimmery nude shadow up to your brows.



3

Apply a darker grey shadow along the upper lashline and into the crease, then blend it to soften the line.



4

Sweep on a matt pale pink lipstick – either straight from the stick or using a brush.

5

Finish the look by adding some kohl eyeliner and lashings of black mascara to create that special Rachel smoulder.

What you'll need



1 Ybf Transforming Cheek Colour Quad, £18 at QVC (www.qvcuk.com) 2 Barbara Daly Make-Up For Tesco Designer Eyes in Graphite, £4.75 (0800 505555) 3 Rimmel Volume Booster Lipstick in Glam, £4.99 4 Urban Decay 24/7 Glide-On Eye Pencil in Zero, £9 at Boots 5 Gosh Show Me Volume Mascara in Black, £8 at Superdrug



Get Rachel's lush locks

with tips from Stuart Phillips, celebrity stylist



Apply a light mousse from the mid-lengths to the ends of your hair, then spritz on some root-lift spray.



Roughly dry your hair, then add rollers. Blow-dry your fringe forward and to one side.



When the hair is completely dry, remove the rollers, run your fingers through the waves and add a parting.